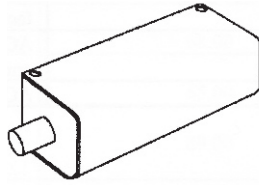


See price list for available finishes (finish chart is on the order form)

Alarm Lock Electric Deadbolts



- Projects the bolt only while power is "on"
- Lock or unlock by remote switch, key switch, time programmer or other electrical contact.
- Complies with safety regulations
- Keeper included

Models	Description
004-103	24 Volts Fail Safe
004-104RA	24 Volts Fail Secure



043-391 Plus 628
Split Armature

Locknetics 390+ MagForce™ Lock

- Security lock designed to interface with electronic access control systems, automatic door operators, and fire or other hazard sensing systems, to provide egress upon detectable emergency
- Excellent for both security and life safety requirements when connected to the fire alarm circuit.
- UL listed
- ANSI BHMA standard for electromagnetic locks
- Five year warranty.

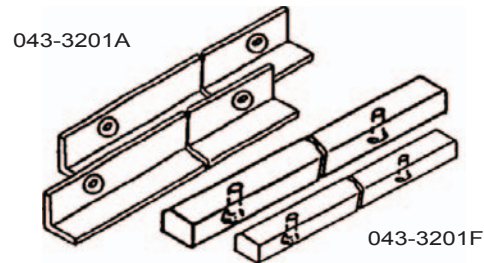
Specifications:

- **Holding Force:** 1650 Lbs.
- **Input:** 12/24 VDC Selectable
- **Current Draw:** .67@12V. (Amps) .35 @24V
- **Winnq:** Wire Leads. 12" Long
- **Dimensions:** Sgl Lock Body: 10-1/2" x 2-3/4" x 1-11/16"

Models	Description
043-390 PLUS 628	Elec. Maglock f/Sgl. Door
043-391 PLUS 628	Split Armature Maglock
043-T J905 626	F/390 Top jamb Mounting Kit



043-320 Plus 628



043-3201A

043-3201F

Locknetics 320+ MiniLine™ Lock

- Medium security lock designed to interface with electronic access control systems, automatic door operators, and fire or other hazard sensing systems, to provide egress upon detectable emergency
- Excellent for both security and life safety requirements when connected to the fire alarm circuit.
- UL listed.
- ANSI/BHMA standard for electromagnetic locks
- Five year warranty.

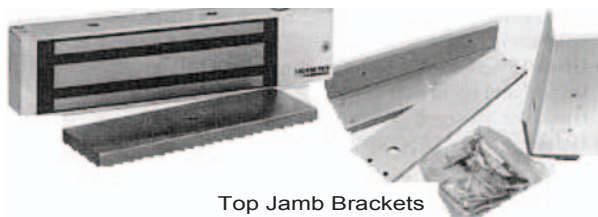
Models	Description
043-320PLUS 628	Satin Aluminum Finish
Accessories	Description
043-T J20S 628	Top jamb Mounting Kit f/320.
043-3201 F	1-1/4 x 1/8 Filler Plate
043-3202F	1-1/4 x 1/4 Filler Plate.
043-3201A	1 x 1 Angle Bracket.
043-3202A	1-1/2 x 1 Angle Bracket.

See price list for available finishes (finish chart is on the order form)

043-392+ Double Magnet Less Module



043-390+ Less Module



Top Jamb Brackets

Locknetics
390+ MagForcE™ Module System

Top jamb mounting bracket provides a “cleaner” architectural look while eliminating any vulnerability created by exposed mounting hardware, thereby increasing safety and reliability. Additionally, the top jamb bracket has slide-in architectural finish plates to match the architectural finishes within a building’s decor.

Models	Description
043-390PLUS S 628LM	Less Module
043-390PLUS MBS 628LM	Less Module
043-392PLUS S	Less Module
043-392PLUS S MBS628LM	Less Module
043-T J90S 626	Top jamb Mtg. Kit f/390
043-T J92 626	Top jamb Mtg. Kit f/392



055-8375



055-8320

RCI
Conford 8300 Series
Electro-Magnetic Locks

- **Life Safe:** Ensures instant release; conforms to building code standards.
- **Fail Safe:** Tested for electrical overload, over heating, electrocution, insulation and burglary resistance according to #8J80 UI 1034 criteria, (BP 5922).
- **Fire Safe:** Unlocks instantly when electricity is discontinued.
- **Holding Force:** Up to 1500 lbs.
- **Easy Installation:** Versatile adjustable mounting bracket for new or existing installations, two extra long hardened cap screws included.
- **Low energy consumption:** 8310 - 280 milliamps, 8320 - 430 milliamps.
- **Dual voltage:** Input may be 12 or 24 volt DC (AC input possible through a rectifier).
- **Self Aligning:** Armature plate accommodates all arcs of door swing.
- **Warranty:** 10 year limited warranty.

Models	Finish	Description
055-8320 628	28	12/24VDC Double Door
055-8375 28	28	300# Micro Mag Mortise Mounted

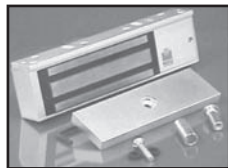
See price list for available finishes (finish chart is on the order form)



RCI
960 Series Key Switches

- Extruded aluminum 1/4" plate with beveled edges for tamper resistance.
- Compatible with standard mortise cylinders with straight or clover cams in 1-1/8" or 1-1/4" cylinder lengths.
- Two #6-32 stainless steel tamper proof screws and wrench included.

Models	Finish	Function
055-960MO28	28	Momentary
055-960MA28	28	Maintained



Rofu
8011 LC Series 12/24 VDC

- Single Door Lock.
- Holding force - up to max. 1300 lbs.
- Voltage -12 VDC 24VDC field adjustable.
- Fail Safe - releases instantly when power is discontinued.
- Limited warranty - 5 years.
- No residual magnetism.
- Magnet size - 10-1/2" x 2-5/8" x 1-5/8".
- Low current Draw AC input thru rectifier
450 mA @12 VDC, 225 mA @24 VDC.
- UL Listed.

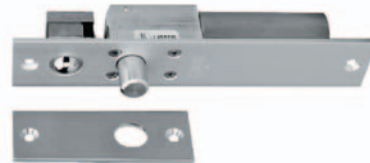
Model	Description
058-8011LC	US28 or US40



SDC
ZR1565 Hi/Shear Em Lock

- 2700 lbs. holding force combines the best in fail-safe performance with the most advanced features in shear lock design.
- Lateral and vertical field adjustment. . Special alloy steel shear. stops for long life.
- Built-in field adjustable auto relock switch.
- Field adjustable auto relock delay timer.
- Compact design allows installation in 1-1/4" face frames (models 1562, 1566) or 1-3/4" face frames (models 1561, 1565).
- Operates on 12VDC or 24VDC without field adjustment.

Model
062-ZR1565

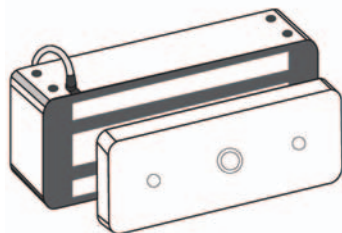


SDC
Electric Deadbolt

- Fail-safe device for mounting in either hollow metal or solid construction door frames.
- 5/8" bolt, 3/4" throw.
- Adjustable auto relock B switch.
- Variable time delay option.
- Monitoring sensors option.
- UL and ULC listed.
- "Dual Fail Safe" option.
- Stainless steel bolt.
- Space saver design.

Model
062-ZR1091A

See price list for available finishes (finish chart is on the order form)

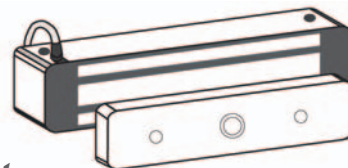


Securitron 62 Magnalock

Security And Life Safety

- Over 1200 pounds of certified electromagnetic holding force.
- Vandal and weather resistant, satin stainless steel case.
- UL recognized for use on emergency exit doors.
- Efficient 3-watt power consumption (125 mA at 24VDC, or 250 mA at 12VDC).
- Instantaneous unlocking with no residual magnetism.
- Fall-safe design, however, a small battery will run Magnalock for hours.
- Optional SENS™ lock status sensor assures the Magnalock is holding at full force.
- Five year warranty.
- Measures: 1-3/4" x 2-15/16" x 8";
Faceplate 1/2" x 2-3/4" x 6".
- Dress covers available.

Models	Voltage
Standard Model	
063-62 12/24VDC	12/24VDC
Offset Mount Magnalock	
063-62 12 SAOS62	12/24VDC
Split Strike Magnalock	
063-622 24SASS	12/24VDC
Magnalock with SENSTAT™ and Contacts	
063-M62 24SC	12/24VDC
F - Face Drilled for Inswinging Door (order w/z bracket)	
063-62F 24VDC	12/24VDC
GF - Face Drilled w/Conduit Fitting, (1/2"ID, 3/4"OD Pipe Thread)	
063-62GF 24VDC	12/24VDC
MXD-32 - Exit Delay Initiation Assembly for Model 62	
063-MXD 62	
SB-MXD - Plunger Sexbolt Module for any Magnalock	
063-SB MXD	



Securitron Model 82 Magnalock

- Highest security needs.
- Over 1,800 pounds of electromagnetic holding force
- Vandal/weather resistant stainless steel case.
- Efficient 4-watt power consumption, (170 mA @ 24 VDC, 320 mA @ 12 VDC).
- New SENSTAT™ lock status design included, SPDT dry output. Switches when lock loses power and/or the armature is in contact.
- New solid state patented instant release/noise suppression circuit. No suppression electronics needed for sensitive access control/alarm equipment.

Models	Voltage
063-M82SC24VDC	12/24VDC
063-M82SC F24VDC	12/24VDC



Securitron MiniMag

Traffic Control And Life Safety

- Over 600 pounds of certified - electromagnetic ~ holding force.
- Suitable for traffic control - not intended for security doors.
- Compact size: 8" x 1-1/2" X 1-5/8".
- Vandal and weather resistant stainless steel case.
- Efficient 3.5 watt power consumption. (150 mA at 24 VDC, or 300 mA at 12 VDC).
- Five year warranty.

Models	Voltage
063-32 12VDC	12VDC
063-32 24VDC	24VDC
063-32F 12/24VDC	12/24 VDC
063-32C 24VDC C - Senstat-dry contact	24VDC

See price list for available finishes (finish chart is on the order form)



Securitron Shear Alignment Magnalock

- Fully concealed mounting.
- Over 1,000 pounds of electromagnetic holding force.

Model	Description
063-SAM	Shear lock
063-SAMSC	Shear lock with SENSTAT™



Securitron Transformers

- AC plug in transformer.
- UL Listed, Class II - fused.

Models	Description
063-TP-12-3	Transformer Plug In 12 VAC-3 Amp
063-TP-24-2	Transformer Plug In 24 VAC-1.5 Amp

Securitron Batteries

The B-12-4 12 Volt 4 Amp Hour and B-24-4 24 Volt 4 Amp Hour battery packs perfectly compliment the BPS series power supplies for those applications where the doors must not open in the event of a power failure. For best system performance, add the PSM series power supply monitor that systematically tests battery pack and power supply system integrity.
3 1/2" x 2 3/4" x 4" sealed lead acid



Models	Description
063-B-12-4	Battery 12 VDC 4 Amp Hour
063-B-24-4	Battery 24 VDC 4 Amp Hour



Securitron Bridge Rectifier

The model BR-7 bridge rectifier will convert an AC input, like our TP Series transformer, to full wave rectified DC output with a maximum 7 Amp capacity. Potted with 4 color coded leads.

Model	Description
063-BR-7	Bridge Rectifier 7 Amp 12 or 24 VDC

See price list for available finishes (finish chart is on the order form)

Securtron Key Switches



- MK Series (mortise) UL Listed.
- Accepts user supplied mortise cylinders .
- 1-1/8" or 1-1/4" and can use 1 (included) or 2 (optional) switches.
- Bi-color LED, 12/24VDC.

Models	Description
063-MK	Momentary, Single Gang
063-MKA12 24VDC	Alternate, Single Gang
063-MKN	Momentary, Narrow Style
063-MKAN	Alternate, Narrow Style
063-MKS	Momentary. Switch Only

Clamp-On



Plug-In

Trine Transformers

- U.L. listed.
- Low Voltage 120VAC primary for residential, commercial and industrial uses.

Clamp-On Type - Secondary			
Models	Volts	VA	AMPS
070-525	8	10	1.25
	16	10	0.62
	24	20	0.83
070-599	24	40	1.66
Plug-In Type			
Models	Volts	VA	AMPS
070-5201	24	20	0.80
070-5204	12	20	1.66
070-5205	8	10	1.25
	16	10	0.62
	24	20	0.83



070-017TDC

070-018 1

Trine Digital Coded Receiver

Model: 070-017TDC

- Built in 5-45 second delay.
- Operates on 12-24 VAC/DC.
- Numbered screw terminals provided.
- 3 amp NO/NC contacts.
- Dry "c" contacts no/nc/common.

Trine Digital Coded Transmitter

Model: 070-018 1

- 150 ft. operating range.
- 6,561 codes available.
- 12 volt battery included.
- Belt clip & key ring.
- Contemporary design.
- Operates on 318 Mhz.

Models	Description
070-017TDC	Digital Coded Receiver
070-018 1	Digital Coded Transmitter