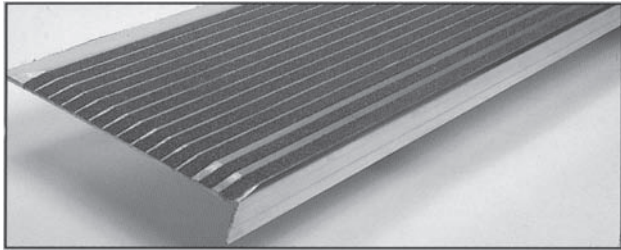


See price list for available finishes (finish chart is on the order form)



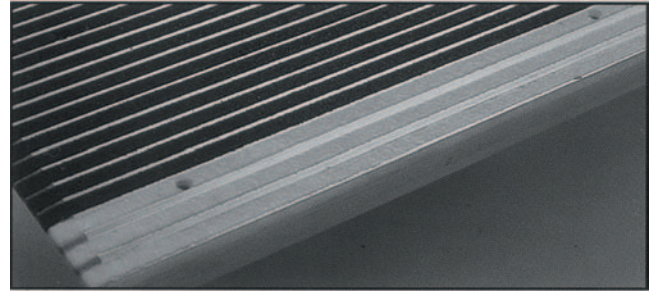
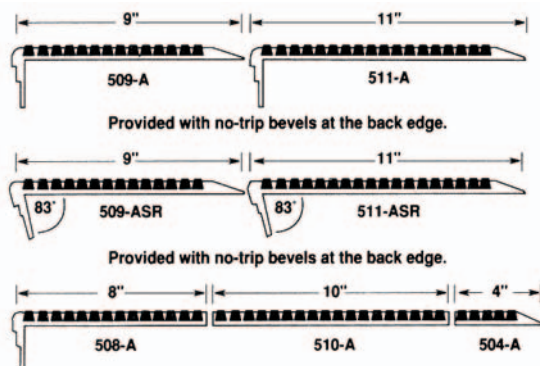
Amstep Series 500

The Series 500 is designed to combine top level performance with bottom-line economy. These sturdy treads are perfect for most stairway requirements.

Series 500 treads are manufactured of high quality, heavy duty extruded aluminum. An exclusive safety traction surface, consisting of special epoxy abrasive non-slip particles, is bonded and locked into strips within the aluminum base. The result is an attractive, extremely durable step that provides a high degree of safety.

- Typical applications include schools, public buildings, hospitals and industry.
- A variety of designs and colors are available to match your specific requirements.
- Treads shall be 9/32" thick
- Lip shall be 1 1/8" from underside.
- Treads will have a coefficient of friction 1.02 dry, 0.98 wet per ASTM F609-79.
- Treads will be furnished with drilled and countersunk holes.
- **Colors:** Black, Tan, Green, Brown, Yellow, Red & Gray

Models	Description
107-509A	9"
107-511A	11"
107-509ASR	9" with no-trip bevels at the back edge
107-511ASR	11" with no-trip bevels at the back edge
107-508A	8" with no-trip bevels at the back edge
107-510A	10" with no-trip bevels at the back edge
107-504A	4" with no-trip bevels at the back edge



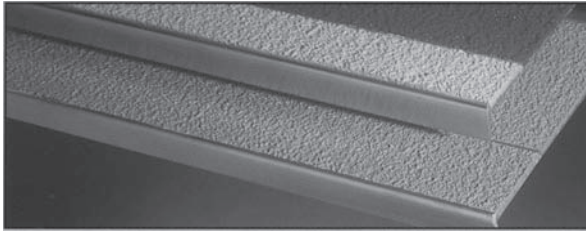
Amstep "Glow-in-the-Dark" Safety

GlowLine™ is an exciting development in stairway safety. These new renovation treads offer all the advantages of the Series 500 - non-slip surface, durability, easy installation - plus one added safety feature... the front edge "glows-in-the-dark."

- Absorbs natural or artificial light and then emits a bright glow when the light source is removed.
- Provides safe egress during periods of temporary darkness such as power outages.
- Treads are black with a green phosphorescent front edge.
- Manufactured of high quality, heavy duty, extruded aluminum.
- A safety traction surface, consisting of special epoxy abrasive particles, is bonded and locked into strips within the aluminum base.
- This produces a non-slip surface that offers outstanding durability and easy maintenance.

Models	Description
107-509A- GLO	9"
107-511A- GLO	11"
107-509ASR- GLO	9" with no-trip bevels at the back edge
107-511ASR- GLO	11" with no-trip bevels at the back edge
107-508A- GLO	8" with no-trip bevels at the back edge
107-510A- GLO	10" with no-trip bevels at the back edge
107-504A- GLO	4" with no-trip bevels at the back edge

See price list for available finishes (finish chart is on the order form)



Amstep Series 700

The Series 700 was originally developed to withstand the high traffic experienced by stairways in mass transit facilities. In these conditions of extreme volume and severe impact, Series 700 treads exhibit remarkable durability. They resist cracking and peeling while maintaining a safe, non-slip surface for years.

- Special non-slip formulation, bonded to a heavy duty aluminum base.
- Surface resists dirt, liquids and common contaminant's.
- Amstep Series 700 designs for renovation.
- Treads shown are 5/16" thick.
- Lip 1 1/4" from underside.
- Holes drilled and countersunk.
- **Colors:** Red, Tan, Brown, Aluminum, Black, Yellow, Bronze, Blue, Gray
- To Cover deeper landing areas, the following Amstep 700 renovation designs can be used in any combination.

Models	Description
107-709H	9"
107-711H	11"
107-709ASR	9" with no-trip bevels at the back edge
107-711ASR	11" with no-trip bevels at the back edge
107-707A	7" with no-trip bevels at the back edge
107-708A	8" with no-trip bevels at the back edge
107-710A	10" with no-trip bevels at the back edge
107-704A	4" with no-trip bevels at the back edge

